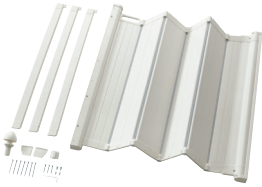




Product Safety Recall



PATRULL safety gate
(Article No. 302.004.89)



**PATRULL KLÄMMA
safety gate**
(Article No. 702.265.24)



**PATRULL FAST
safety gate**
(Article No. 902.265.18)



PATRULL safety ext gate
(Article No. 602.476.35)



**PATRULL KLÄMMA
safety ext gate**
(Article No.102.265.22)

PATRULL KLÄMMA sold at IKEA since Aug 1995; **PATRULL FAST** since April 2012 and **PATRULL safety gate** since 2014.

Defect: The locking mechanism is not reliable and the gates could open unexpectedly.

Hazard: If the safety gates open unexpectedly, there is a risk of children injuring themselves by falling down stairs.

What to do: Customers should immediately stop use of the PATRULL safety gate and return it to any IKEA store for a full refund. Proof of purchase (receipt) is not required.

Contact Details: Contact IKEA Customer Service on (08) 8154 4532 during store open hours Mon-Fri 10am-9pm, Sat-Sun 9am-5pm or via email at info@adl.IKEA.com.au or visit IKEA.com.au/aa/recalls

**See www.recalls.gov.au for
Australian product recall information**