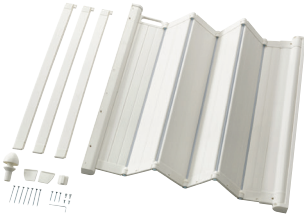


# Product Safety Recall



**PATRULL safety gate**  
(Article No. 302.004.89)



**PATRULL KLÄMMA**  
safety gate  
(Article No. 702.265.24)



**PATRULL FAST**  
safety gate  
(Article No. 902.265.18)



**PATRULL safety ext gate**  
(Article No. 602.476.35)



**PATRULL KLÄMMA**  
safety ext gate  
(Article No. 102.265.22)

**PATRULL KLÄMMA** sold at IKEA since Aug 1995; **PATRULL FAST** since April 2012 and **PATRULL safety gate** since 2014.

**Defect:** The locking mechanism is not reliable and the gates could open unexpectedly.

**Hazard:** If the safety gates open unexpectedly, there is a risk of children injuring themselves by falling down stairs.

**What to do:** Customers should immediately stop use of the **PATRULL safety gate** and return it to any IKEA store for a full refund. Proof of purchase (receipt) is not required.

**Contact Details:** Contact IKEA Customer Service on (08) 9201 4532 during store open hours Mon-Fri 9am-9pm, Sat 8am-5pm, Sun 11am-5pm or via email at [info@perth.IKEA.com.au](mailto:info@perth.IKEA.com.au) or visit [IKEA.com.au/aa/recalls](http://IKEA.com.au/aa/recalls)

**See [www.recalls.gov.au](http://www.recalls.gov.au) for  
Australian product recall information**