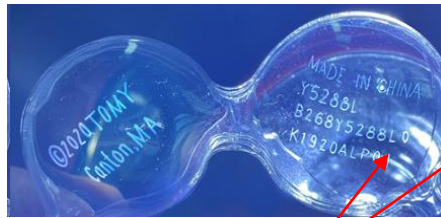


# Product Safety Recall

## Lamaze Chill Teether Single

Batch numbers E1920ALP01 and K1920ALP01

(sold in selected Coles & Woolworths Supermarkets and selected Baby & Toy retailers in Australia between Jan 2021 and Dec 2022)



### Production Code

**What are the Defects:** The recall is due to microbial contamination. The liquid filling in production code K1920ALP01 is contaminated with the bacteria *Spingomonas* sp and the liquid filling in production code E1920ALP01 is contaminated with the bacteria *Staphylococcus epidermidis*

**What are the Hazards:** Product contaminated with *Spingomonas* sp or *Staphylococcus epidermidis* may cause infection or illness in children with weakened immune system if teether is punctured and the liquid filling is ingested

**What to do:** Consumers should immediately stop using the product and keep out of reach of children. The production code can be found directly on the back of the packaging and on the product itself. Only teethers with production code K1920ALP01 and E1920ALP01 are included in this recall  
Please return the item to :

TOMY Australia

Reply Paid 4460

Dandenong South VIC 3175

TOMY will provide a replacement Lamaze item to all affected consumers. Do not return the item to store.

**Contact details:** Consumers can contact TOMY for more information on email [serviceaus@tomy.com](mailto:serviceaus@tomy.com) or phone (03) 9799 5500

**See [productsafety.gov.au](https://www.productsafety.gov.au) for  
Australian product recall information**