

# Product Safety Recall

## Simpson and Electrolux top load washing machines

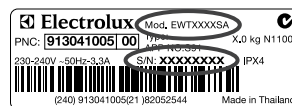
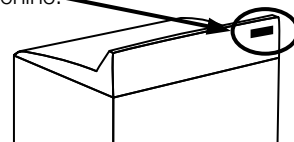
As a precautionary measure, Electrolux Home Products Pty Ltd is issuing a voluntary recall on certain models of Simpson and Electrolux top load washing machines sold throughout Australia and New Zealand.

### Models and serial numbers affected:

All models with serial numbers UP TO AND INCLUDING those listed or with serial number starting with A, B or C		
Brand	Model Number	Serial Number
Simpson	22S750M	917 50424
Simpson	22S950M	851 50013
Simpson	SWT552SA	920 54230
Simpson	SWT605SA	920 54333
Simpson	SWT802SA	920 50411
Simpson	SWT902SA	920 52807
Simpson	SWT955SA	936 51259
Electrolux	EWT606SA	936 51151
Electrolux	EWT806SA	908 51752
Electrolux	EWT806SB	931 50755
Electrolux	EWT959SA	928 51041

### Where to find the model and serial numbers:

The model and serial numbers can be found on the rating plate fixed to the back of the machine.



### What is the fault?

If water and detergent are inadvertently spilt over the lid of these machines, it may penetrate the lid-locking switch device (see Fig.1) and conduct a very low electric current to the lid and its surrounds.

### What will happen?

You may experience a mild tingling sensation in your finger-tips when you touch the top of the machine, and to this extent there is the slight possibility of an electric shock hazard.

### Can I still use my machine? YES – READ ON

The machine can continue to be used safely.

However, to avoid any possibility of the experience described above, please switch OFF the machine at the control panel (see Fig.2) while loading and unloading your machine and when not in use.

### What should I do?

Electrolux urges owners or users of the above machines to register details at [www.simpson.com.au/recall](http://www.simpson.com.au/recall) or [www.electrolux.com.au/recall](http://www.electrolux.com.au/recall) or call the toll free number **1800 001 218**.

Electrolux will make arrangements for a service technician to attend your premises and repair the machine, free of charge.

### Service calls can be booked during the following hours:

Monday to Friday: 8am to 7pm ESST  
Weekends: 10am to 3pm ESST

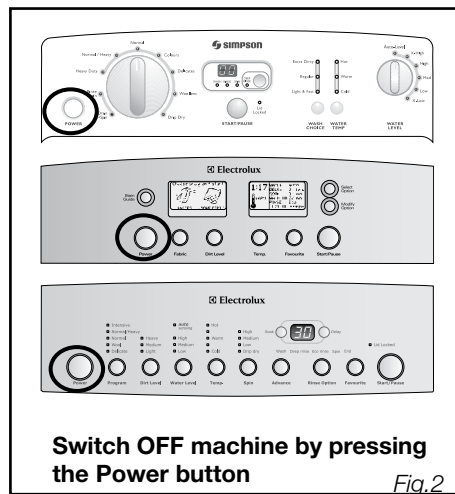
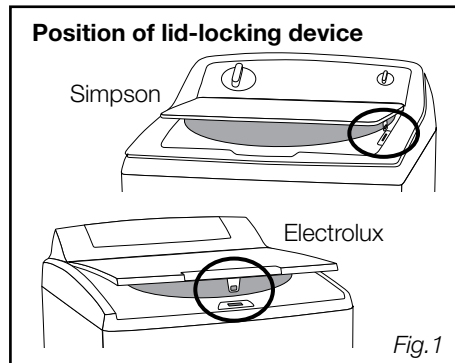
**OR register your details online anytime and a service call will be placed for you.**

### What will the service involve?

A service technician will, free of charge, fit an automatic isolating device behind the control panel. The service call will take about 30 minutes.

### Further Details

For further details go to [www.simpson.com.au/recall](http://www.simpson.com.au/recall) and [www.electrolux.com.au/recall](http://www.electrolux.com.au/recall) and follow the links to Product Recall or [www.recalls.gov.au](http://www.recalls.gov.au) for Australian Product Recall Information.



Electrolux Home Products Pty Ltd ABN 51 004 762 341. 163 O'Riordan Street, Mascot NSW 2020



See [www.recalls.gov.au](http://www.recalls.gov.au) for Australian Product Recall Information